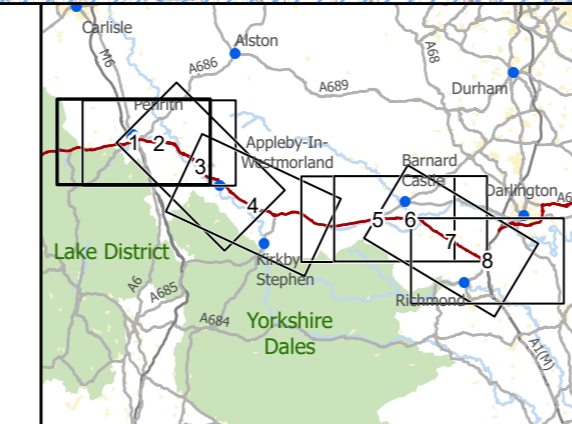


Existing A66
 Order Limits
 Study Area 7km
 Areas Theoretically Visible from Scheme at Road Level (0m) (5m DTM)
 Additional Areas Theoretically Visible from Scheme at HGV Level (4.7m) (5m DTM)
 National Park
 North Pennines Area of Outstanding Natural Beauty



3 Piccadilly Place
Manchester
M1 3BN

P02	First Issue				
	PKELL	CESL	JSIM	AMIT	KWHA
	17/03/22	17/03/22	17/03/22	20/04/22	20/04/22
Revision	Created	Checked	Reviewed	Approved	Authorised

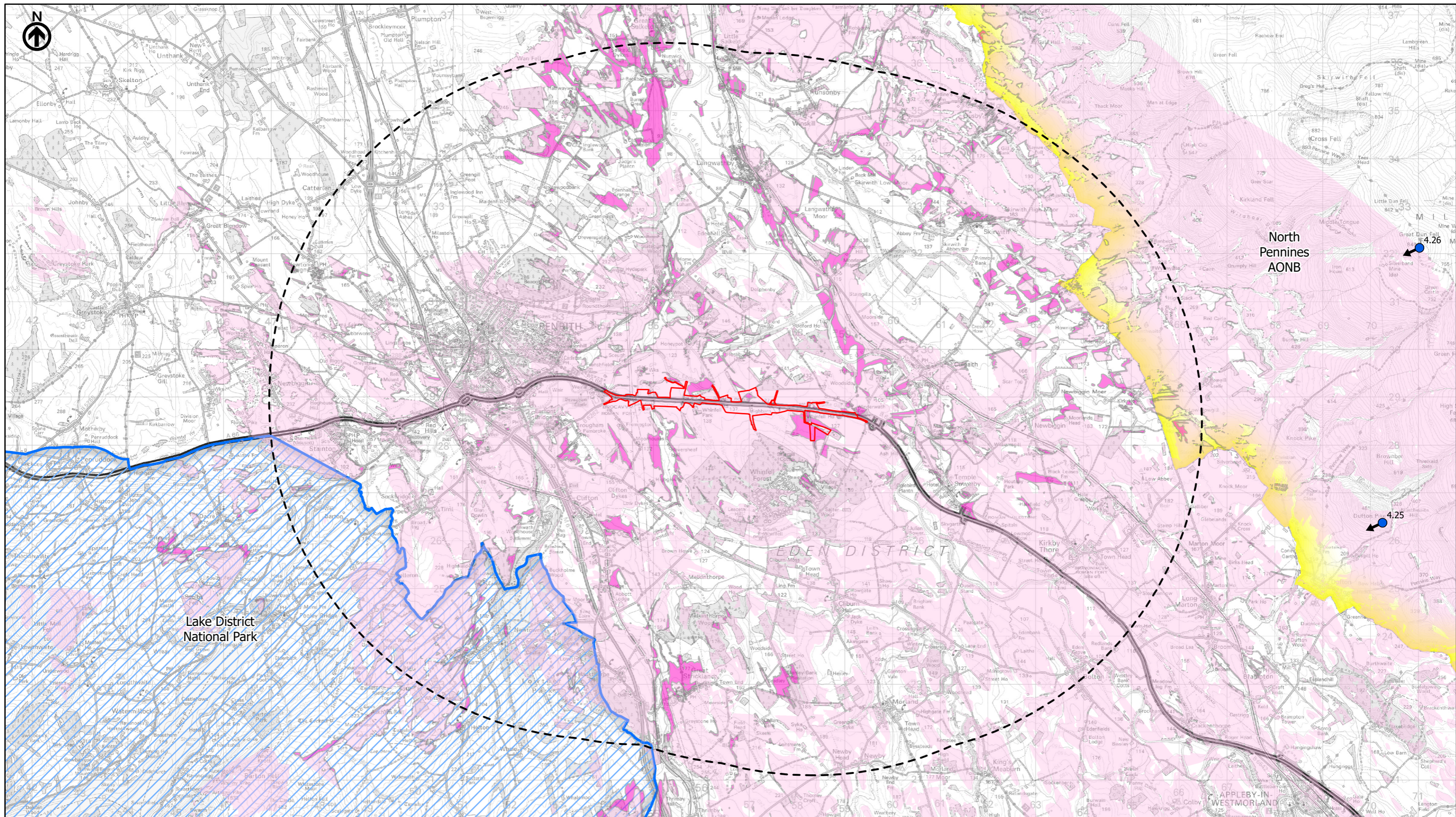
Kilometres

Scale @ A3: 1:75,000 | Project Ref No HE565627 | Stage: Stage 3
© Crown copyright and database rights (2022). All rights reserved. OS 100030649. Contains public sector information licensed under the Open Government Licence v3.0. Digital Surface Model - ©Astrium Ltd and Bluesky International Ltd

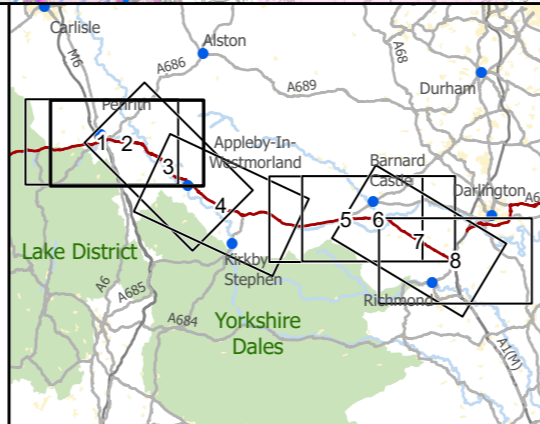
Project Name
 A66 Northern Trans-Pennine Project
Map Title
 Figure 10.3
 Zone of Theoretical Visibility (ZTV 7km)
 Scheme: 0102, M6 Junction 40 to Kemplay Bank
 Sheet 1 of 8

Map Number	Project	Originator	Volume
HE565627	-	AMY	ELS
Location		Type	Role
S00		-	MP - LL - 006070

Suitability	Suitability Description	Revision
S4	FIT FOR STAGE APPROVAL	P02



— Existing A66
 — Order Limits
 - - - Study Area 7km
 ↑ Remote Viewpoint
 Areas Theoretically Visible from Scheme at Road Level (0m) (5m DTM)
 Additional Areas Theoretically Visible from Scheme at HGV Level (4.7m) (5m DTM)
 National Park
 North Pennines Area of Outstanding Natural Beauty



national highways
 3 Piccadilly Place
 Manchester
 M1 3BN

P02	First Issue	PKELL	CESL	JSIM	AMIT	KWHA
		17/03/22	17/03/22	17/03/22	20/04/22	20/04/22
Revision	Created	Checked	Reviewed	Approved	Authorised	

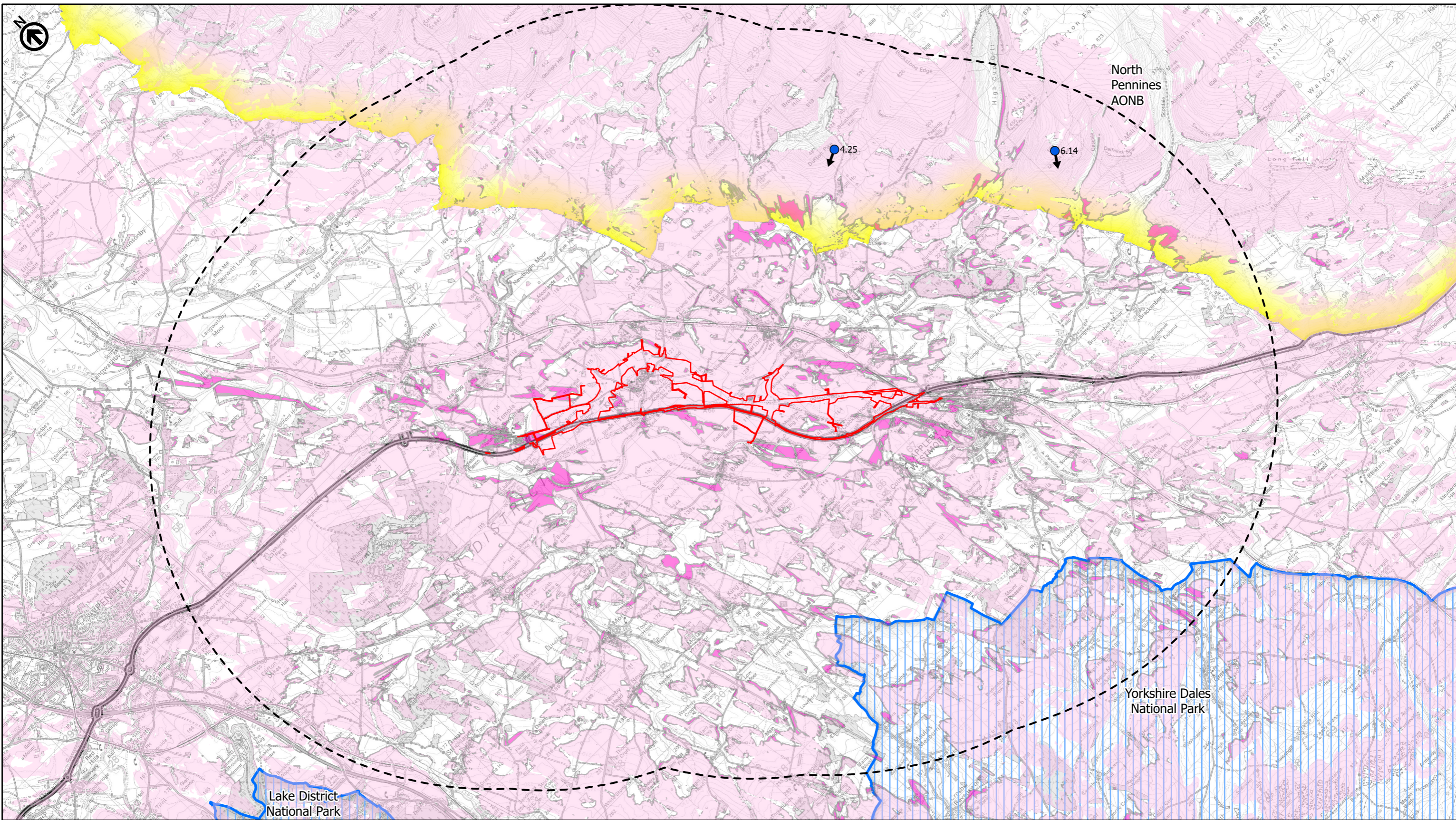
Scale @ A3: 1:75,000 | Project Ref No HE565627 | Stage: Stage 3
 © Crown copyright and database rights (2022). All rights reserved. OS 100030649.
 Contains public sector information licensed under the Open Government Licence v3.0.
 Digital Surface Model - ©Astrium Ltd and Bluesky International Ltd

Project Name
A66 Northern Trans-Pennine Project
 Map Title
Figure 10.3
 Zone of Theoretical Visibility (ZTV 7km)
 Scheme: 03, Penrith to Temple Sowerby
 Sheet 2 of 8

Map Number	Project	Originator	Volume
HE565627	-	AMY	ELS
Location		MP	LL
		Type	Role
			Number

Suitability	Suitability Description	Revision
S4	FIT FOR STAGE APPROVAL	P02

This Environmental Statement Figure meets the requirements of Regulation 5(2)(i) of the Infrastructure Planning (Applications: Prescribed Forms and Procedure Regulations) 2009.



- Existing A66
- Order Limits
- Study Area 7km
- Remote Viewpoint
- Areas Theoretically Visible from Scheme at Road Level (0m) (5m DTM)
- Additional Areas Theoretically Visible from Scheme at HGV Level (4.7m) (5m DTM)
- National Park
- North Pennines Area of Outstanding Natural Beauty



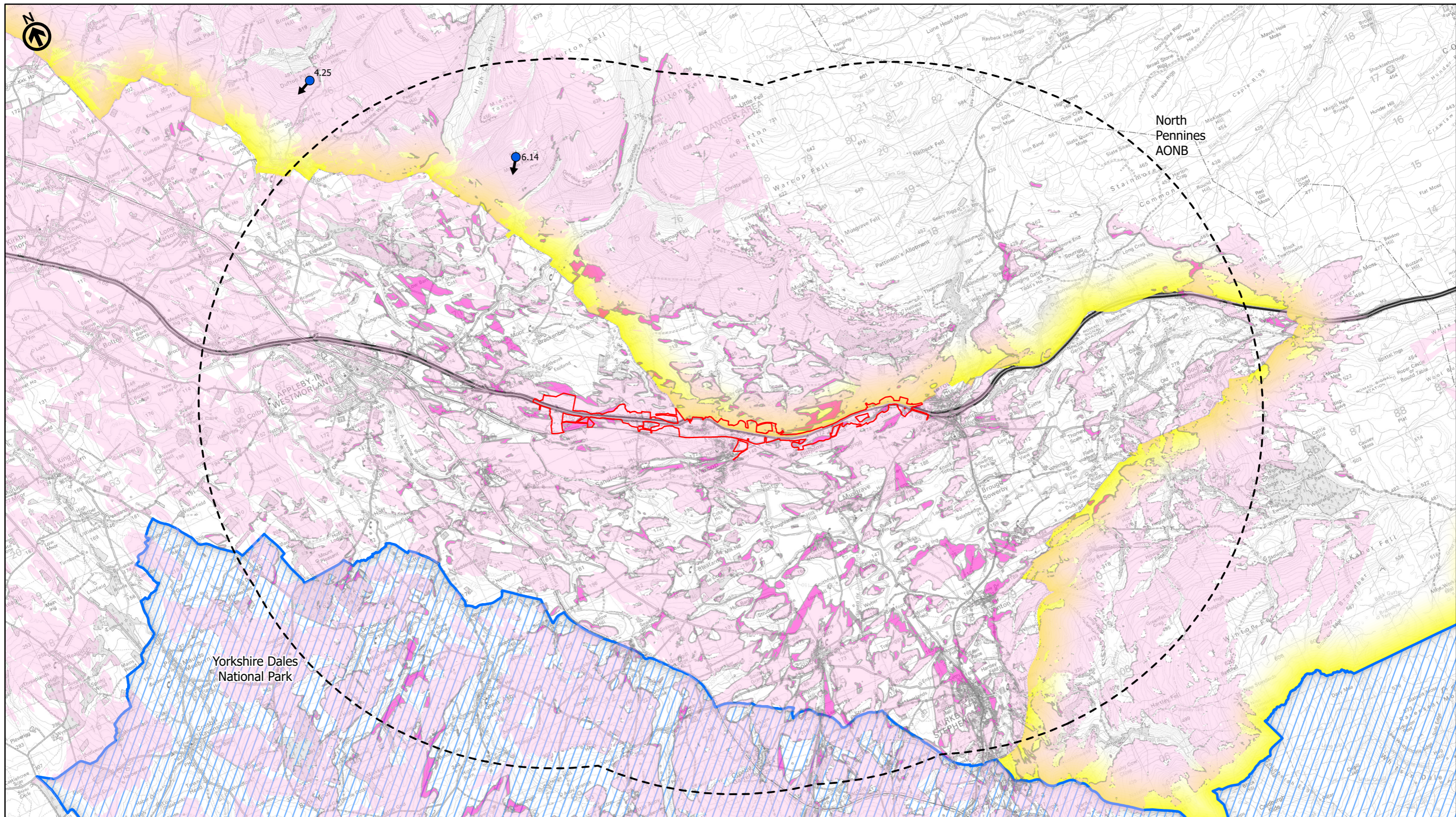
P02	First Issue				
	PKELL	CESL	JSIM	AMIT	KWHA
Revision	Created	Checked	Reviewed	Approved	Authorised
	17/03/22	17/03/22	17/03/22	20/04/22	20/04/22

national highways

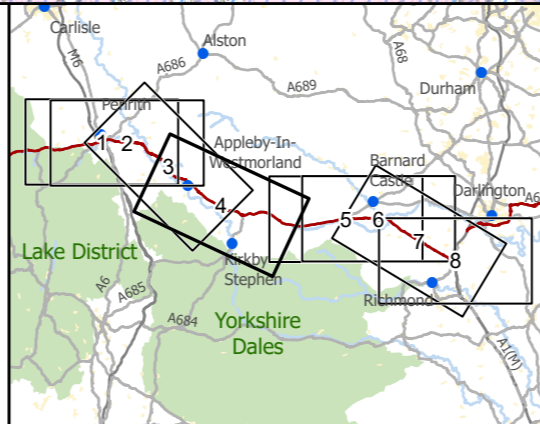
3 Piccadilly Place
Manchester
M1 3BN

Scale @ A3: 1:75,000 | Project Ref No HE565627 | Stage: Stage 3
© Crown copyright and database rights (2022). All rights reserved. OS 100030649.
Contains public sector information licensed under the Open Government Licence v3.0.
Digital Surface Model - ©Astrium Ltd and Bluesky International Ltd

Project Name A66 Northern Trans-Pennine Project			
Map Title Figure 10.3			
Zone of Theoretical Visibility (ZTV 7km)			
Scheme: 0405, Temple Sowerby to Appleby			
Sheet 3 of 8			
Map Number	Project	Originator	Volume
HE565627	-	AMY	- ELS
S00	-	MP - LL	- 006092
Location	Type	Role	Number
Suitability	Suitability Description		Revision
S4	FIT FOR STAGE APPROVAL		P02



- Existing A66
- Order Limits
- Study Area 7km
- Remote Viewpoint
- Areas Theoretically Visible from Scheme at Road Level (0m) (5m DTM)
- Additional Areas Theoretically Visible from Scheme at HGV Level (4.7m) (5m DTM)
- National Park
- North Pennines Area of Outstanding Natural Beauty



national highways 3 Piccadilly Place
Manchester M1 3BN

P02	First Issue				
	PKELL	CESL	JSIM	AMIT	KWHA
	17/03/22	17/03/22	17/03/22	20/04/22	20/04/22
Revision	Created	Checked	Reviewed	Approved	Authorised

Kilometres

Scale @ A3: 1:75,000 | Project Ref No HE565627 | Stage: Stage 3
© Crown copyright and database rights (2022). All rights reserved. OS 100030649. Contains public sector information licensed under the Open Government Licence v3.0. Digital Surface Model - ©Astrium Ltd and Bluesky International Ltd

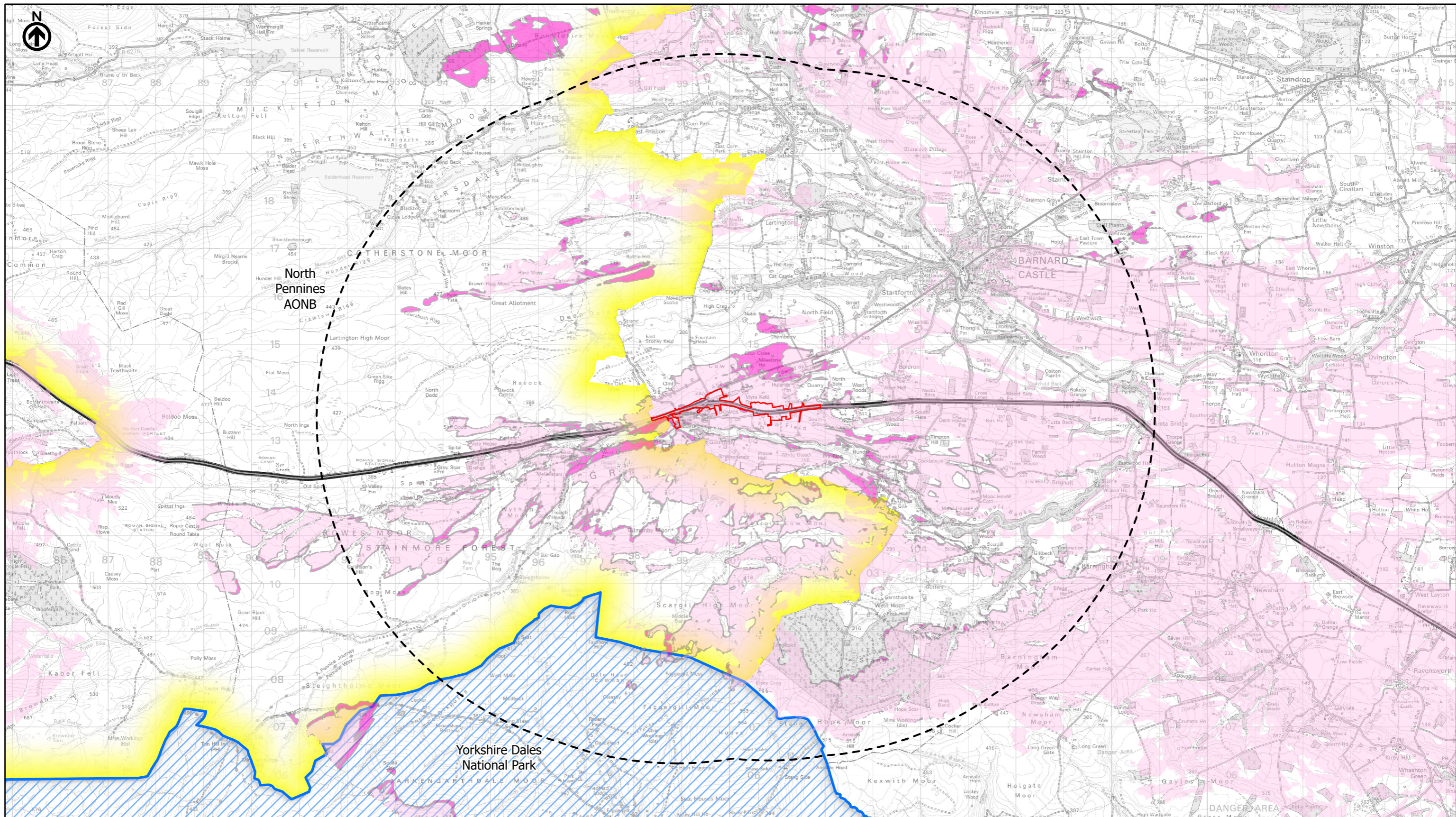
Project Name
A66 Northern Trans-Pennine Project

Map Title
Figure 10.3

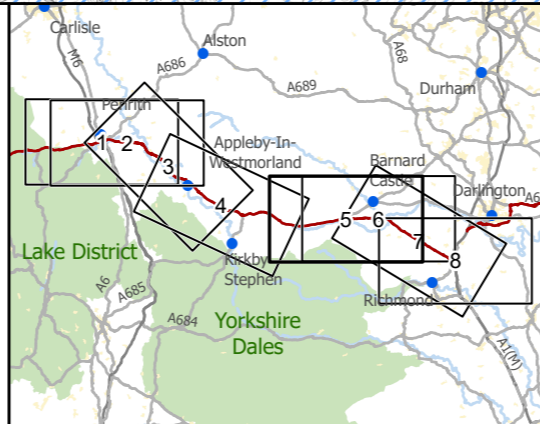
Zone of Theoretical Visibility (ZTV 7km)
Scheme: 06, Appley to Brough
Sheet 4 of 8

Map Number	Project	Originator	Volume
HE565627	-	AMY	-
S00	-	MP	LL
Location	Type	Role	Number

Suitability	Suitability Description	Revision
S4	FIT FOR STAGE APPROVAL	P02

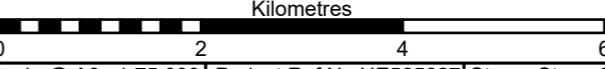


- Existing A66
- Order Limits
- Study Area 7km
- Areas Theoretically Visible from Scheme at Road Level (0m) (5m DTM)
- Additional Areas Theoretically Visible from Scheme at HGV Level (4.7m) (5m DTM)
- National Park
- North Pennines Area of Outstanding Natural Beauty



national highways
 3 Piccadilly Place
 Manchester
 M1 3BN

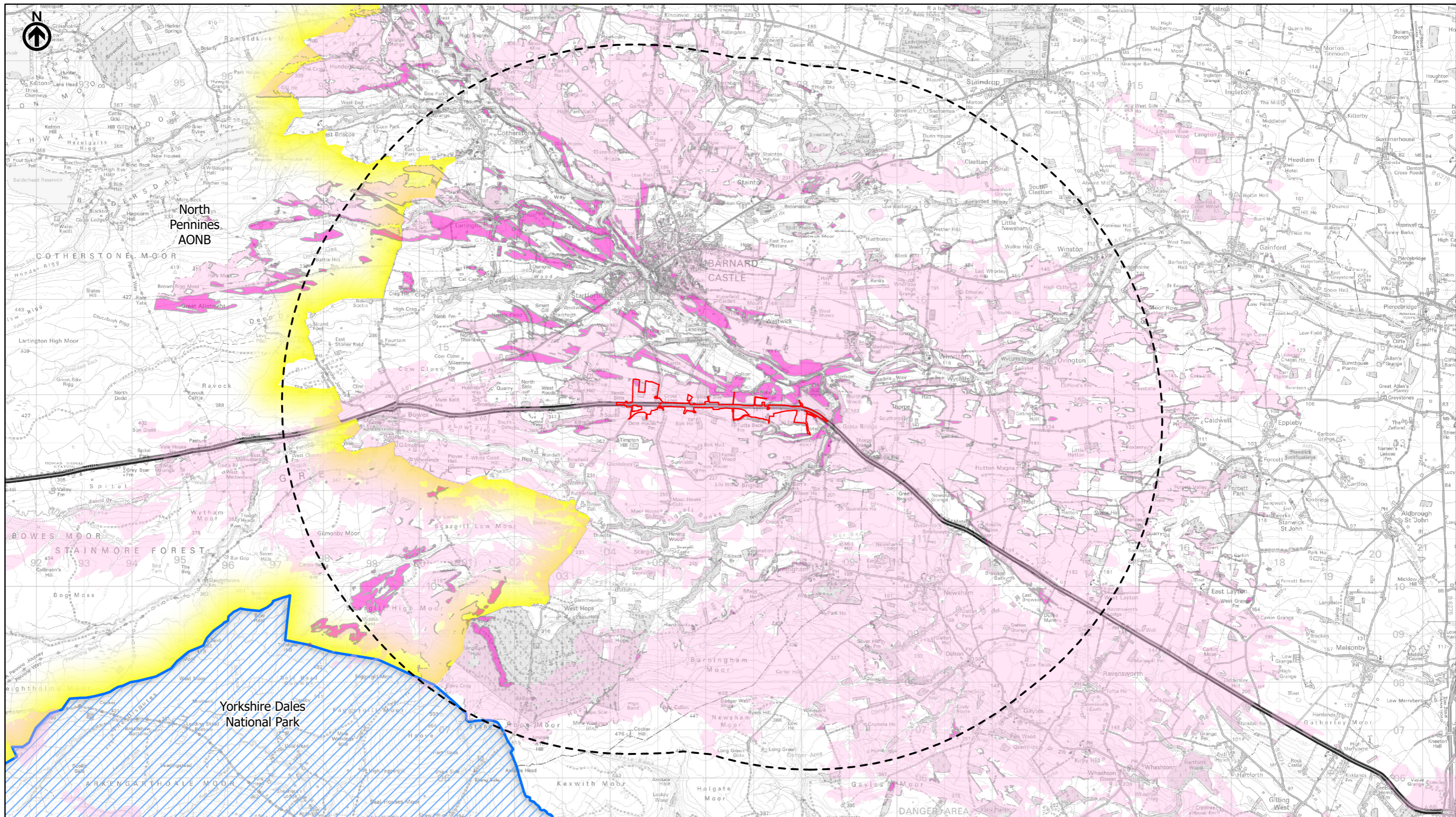
P02	First Issue	PKELL	CESL	JSIM	AMIT	KWHA
		17/03/22	17/03/22	17/03/22	20/04/22	20/04/22
Revision	Created	Checked	Reviewed	Approved	Authorised	



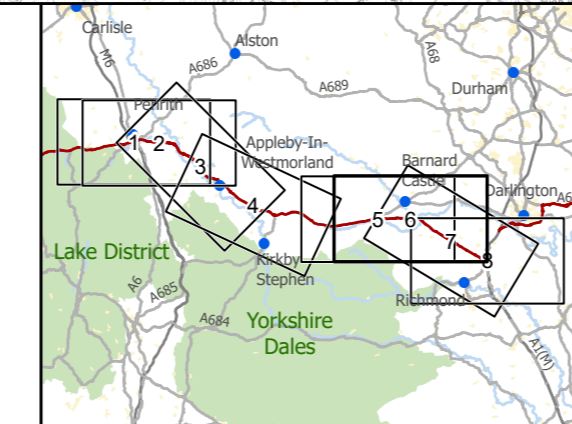
Scale @ A3: 1:75,000 | Project Ref No HE565627 | Stage: Stage 3
 © Crown copyright and database rights (2022). All rights reserved. OS 100030649.
 Contains public sector information licensed under the Open Government Licence v3.0.
 Digital Surface Model - ©Astrium Ltd and Bluesky International Ltd

Project Name
A66 Northern Trans-Pennine Project
 Map Title
Figure 10.3
 Zone of Theoretical Visibility (ZTV 7km)
 Scheme: 07, Bowes Bypass
 Sheet 5 of 8

Map Number	Project	Originator	Volume
HE565627	-	AMY	ELS
Location	S00	-	MP - LL - 006094
		Type	Role Number
Suitability	S4	FIT FOR STAGE APPROVAL	
Revision	P02		



— Existing A66
 — Order Limits
 - - - Study Area 7km
 Areas Theoretically Visible from Scheme at Road Level (0m) (5m DTM)
 Additional Areas Theoretically Visible from Scheme at HGV Level (4.7m) (5m DTM)
 National Park
 North Pennines Area of Outstanding Natural Beauty



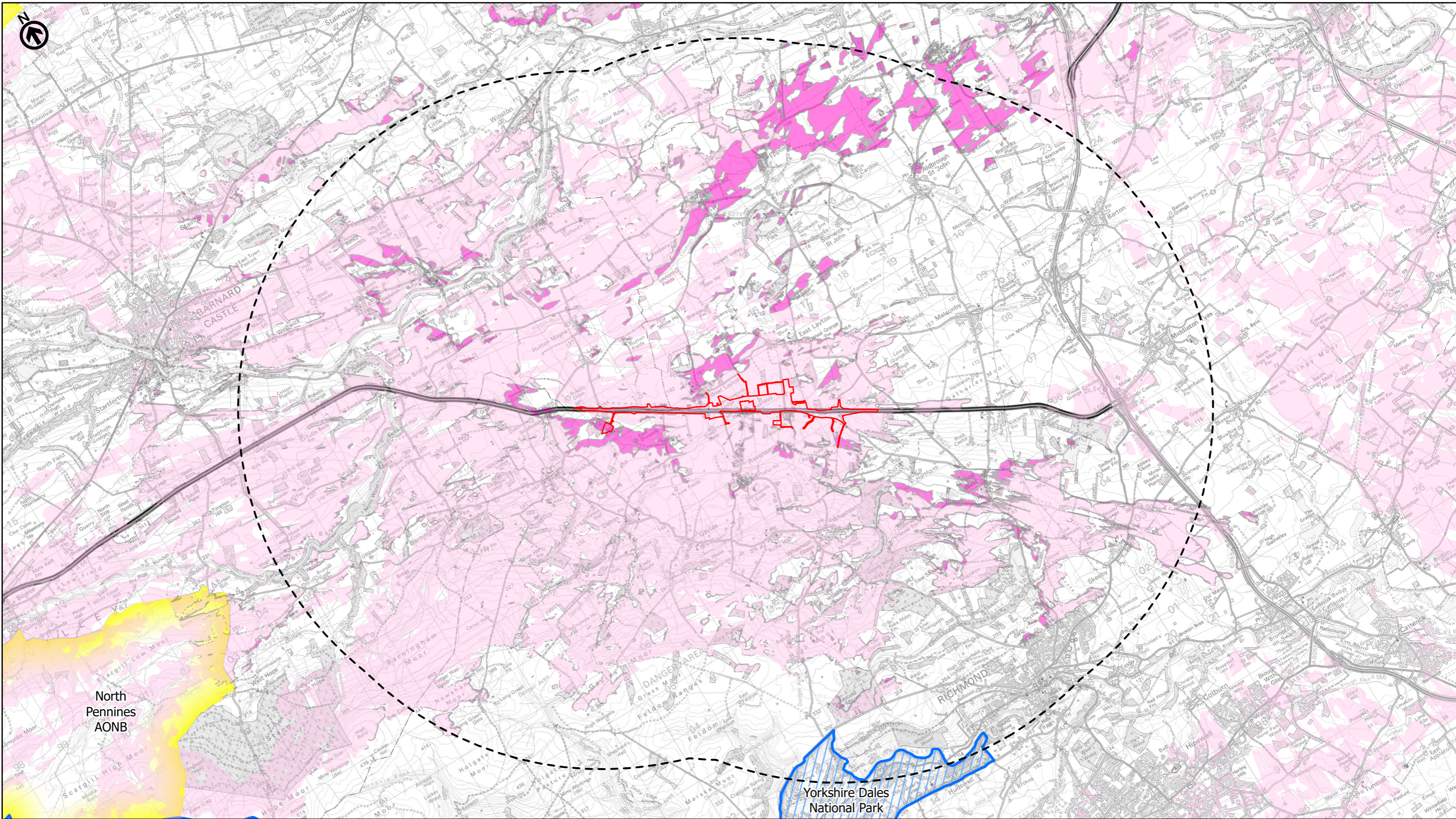
national highways
 3 Piccadilly Place
 Manchester
 M1 3BN

P02	First Issue	PKELL	CESL	JSIM	AMIT	KWHA
		17/03/22	17/03/22	17/03/22	20/04/22	20/04/22
Revision	Created	Checked	Reviewed	Approved	Authorised	

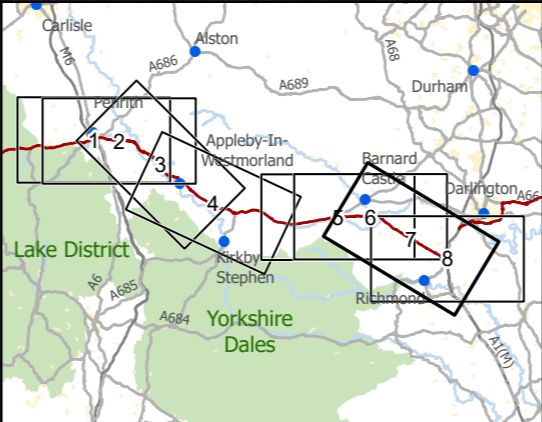
Scale @ A3: 1:75,000 | Project Ref No HE565627 | Stage: Stage 3
 © Crown copyright and database rights (2022). All rights reserved. OS 100030649.
 Contains public sector information licensed under the Open Government Licence v3.0.
 Digital Surface Model - ©Astrium Ltd and Bluesky International Ltd

Project Name
A66 Northern Trans-Pennine Project
 Map Title
Figure 10.3
 Zone of Theoretical Visibility (ZTV 7km)
 Scheme: 08, Cross Lanes to Rokeby
 Sheet 6 of 8

Map Number	Project	Originator	Volume
HE565627	-	AMY	ELS
Suitability	Location		Revision
S4	FIT FOR STAGE APPROVAL		P02



— Existing A66
 — Order Limits
 - - - Study Area 7km
 Areas Theoretically Visible from Scheme at Road Level (0m) (5m DTM)
 Additional Areas Theoretically Visible from Scheme at HGV Level (4.7m) (5m DTM)
 National Park
 North Pennines Area of Outstanding Natural Beauty



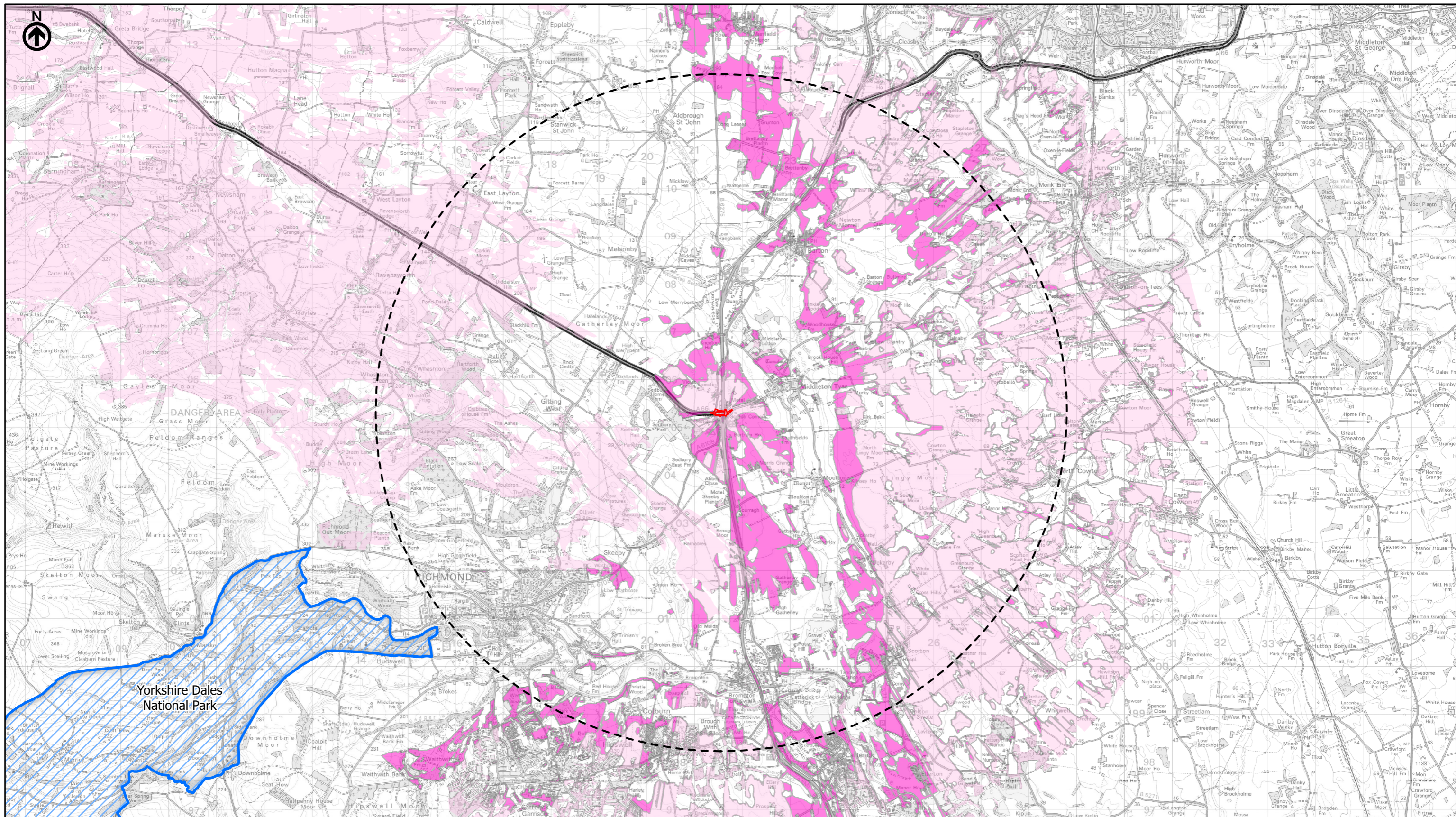
national highways
 3 Piccadilly Place
 Manchester
 M1 3BN

P02	First Issue	CESL	JSIM	AMIT	KWHA
	17/03/22	17/03/22	17/03/22	20/04/22	20/04/22
Revision	Created	Checked	Reviewed	Approved	Authorised

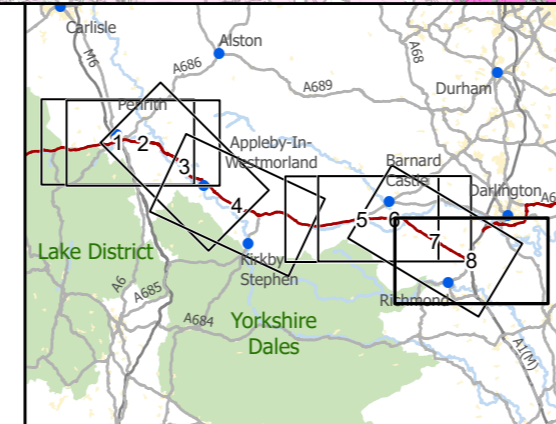
Scale @ A3: 1:75,000 | Project Ref No HE565627 | Stage: Stage 3
 © Crown copyright and database rights (2022). All rights reserved. OS 100030649.
 Contains public sector information licensed under the Open Government Licence v3.0.
 Digital Surface Model - ©Astrium Ltd and Bluesky International Ltd

Project Name
A66 Northern Trans-Pennine Project
 Map Title
Figure 10.3
 Zone of Theoretical Visibility (ZTV 7km)
 Scheme: 09, Stephen Bank to Carkin Moor
 Sheet 7 of 8

Map Number	Project	Originator	Volume
HE565627	-	AMY	- ELS
S00	-	MP	- LL - 006096
Location	Type	Role	Number
S4	FIT FOR STAGE APPROVAL		P02



- Existing A66
- Order Limits
- Study Area 7km
- Areas Theoretically Visible from Scheme at Road Level (0m) (5m DTM)
- Additional Areas Theoretically Visible from Scheme at HGV Level (4.7m) (5m DTM)
- National Park



3 Piccadilly Place
Manchester
M1 3BN

P02	First Issue				
	PKELL	CESL	JSIM	AMIT	KWHA
	17/03/22	17/03/22	17/03/22	20/04/22	20/04/22
Revision	Created	Checked	Reviewed	Approved	Authorised

0 2 4 6

Scale @ A3: 1:75,000 | Project Ref No HE565627 | Stage: Stage 3
 © Crown copyright and database rights (2022). All rights reserved. OS 100030649.
 Contains public sector information licensed under the Open Government Licence v3.0.
 Digital Surface Model - ©Astrium Ltd and Bluesky International Ltd

Project Name A66 Northern Trans-Pennine Project			
Map Title Figure 10.3			
Zone of Theoretical Visibility (ZTV 7km)			
Scheme: 11, A1(M) Junction 53 Scotch Corner			
Sheet 8 of 8			
Map Number Project	Originator	Volume	
HE565627	AMY	ELS	
Location		Type	Role
S00		MP	LL
		- 006097	
Suitability	Suitability Description		Revision
S4	FIT FOR STAGE APPROVAL		P02